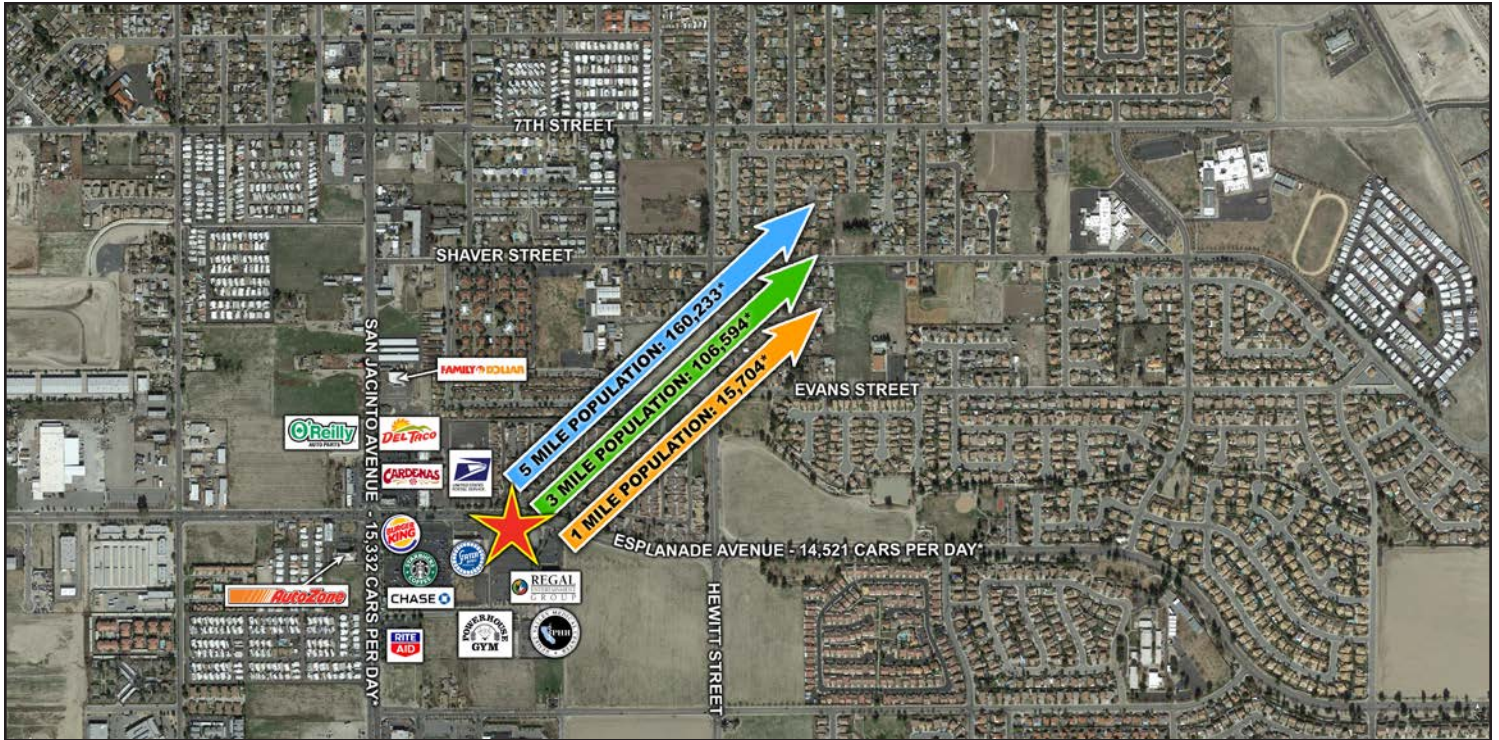


FOR SALE/LEASE/BUILD-TO-SUIT

# RETAIL/MEDICAL OFFICE PAD BUILDING

400 E. ESPLANADE AVENUE, SAN JACINTO, CA 92583



### Area Retailers:



### Features:

- Stand alone pad building in grocery anchored center
- 6,265± SF single-story improvements with multi-tenant capability
- Landscaped yard around building could be fenced/secured
- Excellent parking (former restaurant site)
- Potential uses include medical, dental, veterinary, day care, etc.
- Affordably priced at \$998,975 (\$159.45± PSF)

*The above information, while not guaranteed, has been secured from sources we believe to be reliable. Price, tenant mix, and availability subject to change without notice.*

### EXCLUSIVELY LISTED BY:

**Jerry Palmer**  
jpalmer@WestMarCRE.com  
CA License: #01442207

**Luanne Palmer**  
lpalmer@WestMarCRE.com  
CA License: #01444893

**WestMar Commercial Real Estate**  
Founded in 1988  
[www.WestMarCRE.com](http://www.WestMarCRE.com)

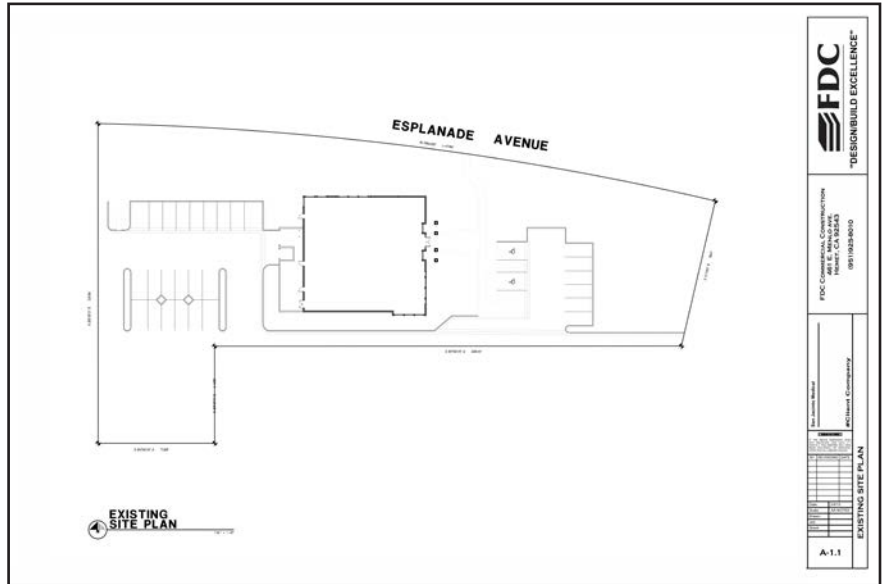




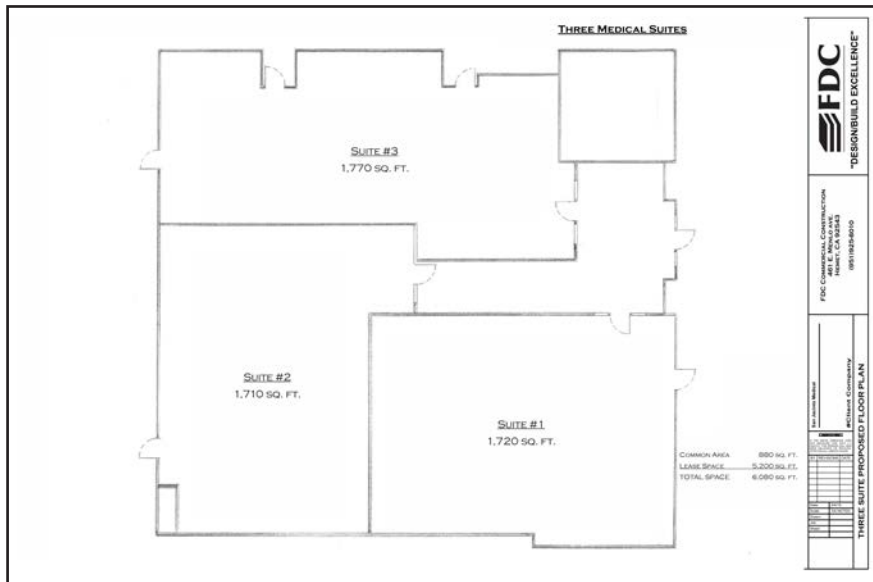
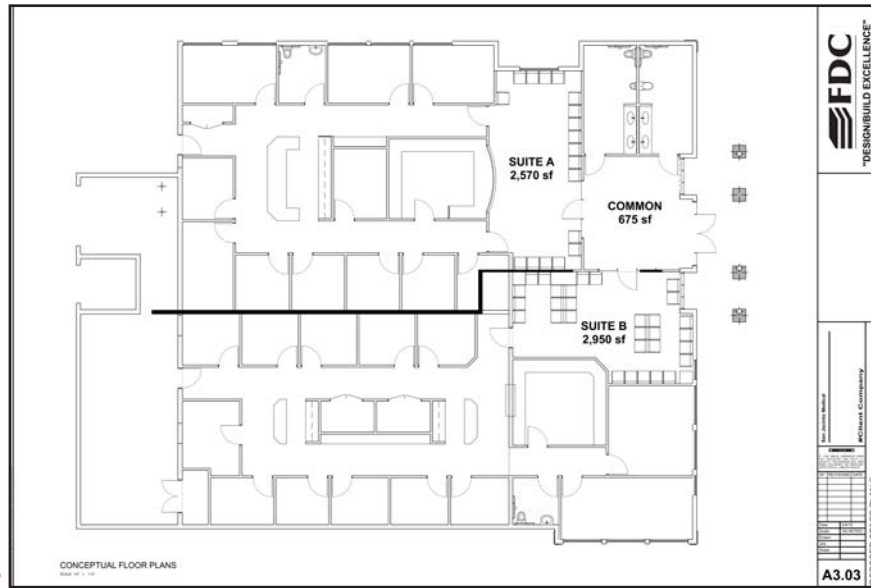
*The above information, while not guaranteed, has been secured from sources we believe to be reliable.*

CONCEPTUAL FLOOR PLANS

SINGLE TENANT



Two SUITES



THREE SUITES

The above information, while not guaranteed, has been secured from sources we believe to be reliable.